

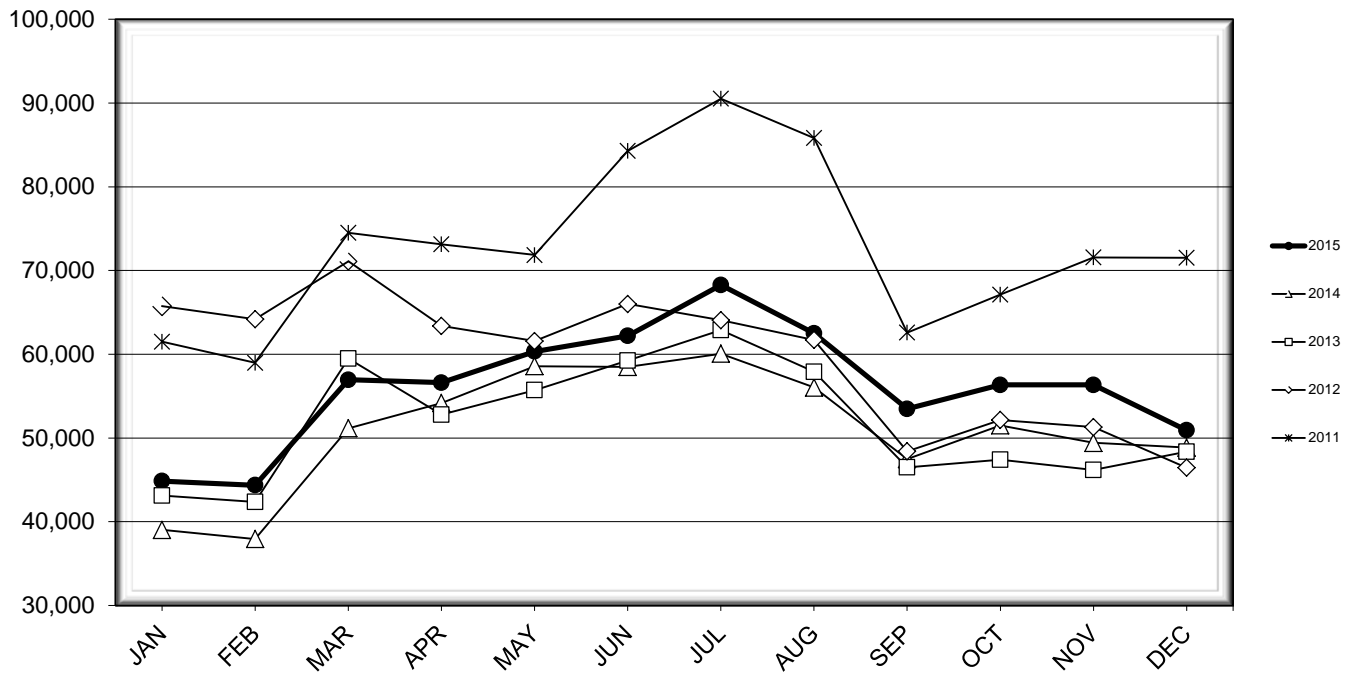


# LEHIGH VALLEY INTERNATIONAL AIRPORT MONTHLY TRAFFIC REPORT DECEMBER 2015

## TOTAL PASSENGER TRAFFIC COMPARISON

Month	2015	Percent Difference	2014	2013	2012	2011
January	44,848	14.94%	39,020	43,126	65,735	61,490
February	44,358	16.91%	37,943	42,351	64,178	58,981
March	56,939	11.29%	51,161	59,475	71,079	74,495
April	56,606	4.49%	54,173	52,787	63,361	73,137
May	60,335	3.02%	58,567	55,711	61,574	71,844
June	62,200	6.38%	58,471	59,240	66,000	84,277
July	68,256	13.64%	60,064	62,872	64,050	90,526
August	62,497	11.56%	56,021	57,901	61,714	85,815
September	53,474	12.65%	47,471	46,485	48,402	62,592
October	56,335	9.37%	51,509	47,409	52,145	67,105
November	56,326	13.99%	49,414	46,176	51,282	71,568
December	50,923	4.27%	48,836	48,363	46,454	71,521

## COMPARISON OF TOTAL PASSENGERS



**LEHIGH VALLEY INTERNATIONAL AIRPORT (ABE)  
MONTHLY TRAFFIC REPORT  
DECEMBER 2015**

**DECEMBER**

**YEAR-TO-DATE**

		<b>DECEMBER</b>				<b>YEAR-TO-DATE</b>			
		<b>2015</b>	<b>2014</b>	<b>Increase (Decrease)</b>	<b>Percent Difference</b>	<b>2015</b>	<b>2014</b>	<b>Increase (Decrease)</b>	<b>Percent Difference</b>
<b>MAJOR AIRLINES:</b>									
Passengers									
Enplaned		1,662	1,463	199	13.60%	32,885	15,102	17,783	117.75%
Deplaned		1,710	1,484	226	15.23%	32,441	15,072	17,369	115.24%
Sub-total		3,372	2,947	425	14.42%	65,326	30,174	35,152	116.50%
<b>REGIONAL AIRLINES:</b>									
Passengers									
Enplaned		23,896	23,039	857	3.72%	305,529	293,351	12,178	4.15%
Deplaned		23,655	22,850	805	3.52%	302,242	289,125	13,117	4.54%
Sub-total		47,551	45,889	1,662	3.62%	607,771	582,476	25,295	4.34%
<b>TOTAL PASSENGERS</b>		<b>50,923</b>	<b>48,836</b>	<b>2,087</b>	<b>4.27%</b>	<b>673,097</b>	<b>612,650</b>	<b>60,447</b>	<b>9.87%</b>
<b>CARGO:</b>									
Enplaned		5,426,959	1,644,537	3,782,422	230.00%	25,207,250	16,519,857	8,687,393	52.59%
Deplaned		5,343,965	1,283,842	4,060,123	316.25%	22,196,571	13,545,420	8,651,151	63.87%
<b>TOTAL CARGO</b>		<b>10,770,924</b>	<b>2,928,379</b>	<b>7,842,545</b>	<b>267.81%</b>	<b>47,403,821</b>	<b>30,065,277</b>	<b>17,338,544</b>	<b>57.67%</b>
<b>CUSTOMS: Entries</b>									
		49	61	(12)	-19.67%	674	722	(48)	-6.65%

**MONTHLY AIRCRAFT ACTIVITY**

The FEDERAL AVIATION ADMINISTRATION  
AIR TRAFFIC CONTROL TOWER at LVIA recorded  
the following aircraft take-offs and landings for the month:

**DECEMBER**

**YEAR-TO-DATE**

		<b>DECEMBER</b>				<b>YEAR-TO-DATE</b>			
		<b>2015</b>	<b>2014</b>	<b>Increase (Decrease)</b>	<b>Percent Difference</b>	<b>2015</b>	<b>2014</b>	<b>Increase (Decrease)</b>	<b>Percent Difference</b>
Major Airlines		590	342	248	72.51%	4,431	4,055	376	9.27%
Regional Airlines		742	909	(167)	-18.37%	11,356	12,122	(766)	-6.32%
General Aviation		1,744	2,111	(367)	-17.39%	26,926	32,353	(5,427)	-16.77%
Military		13	31	(18)	-58.06%	441	475	(34)	-7.16%
Total Itinerant		3,089	3,393	(304)	-8.96%	43,154	49,005	(5,851)	-11.94%
Total Local		3,300	3,503	(203)	-5.80%	44,930	52,132	(7,202)	-13.81%
<b>TOTAL OPERATIONS</b>		<b>6,389</b>	<b>6,896</b>	<b>(507)</b>	<b>-7.35%</b>	<b>88,084</b>	<b>101,137</b>	<b>(13,053)</b>	<b>-12.91%</b>

